

Technical data sheet

Power supply · 30 W

Switchmode power supply, Single-phase, NEC Class 2 compliant

Input: AC 90–264 V, DC 120–375 V

Output: DC 24 V, 1.25 A



Identification

| | |
|----------|------------------------|
| Type | DRAN30-24A |
| Part No. | 722753 |

Product version

| | |
|-------------------|----|
| Datasheet version | 01 |
|-------------------|----|

Input

| | |
|-------------------------|---------------------------------------|
| Number of phases | 1 |
| Rated voltage U_N | AC 100–240 V |
| Operation voltage range | AC 90–264 V / DC 120–375 V |
| Frequency range | 47 Hz – 63 Hz |
| Rated current I_N | 560 mA @ AC 115 V / 330 mA @ AC 230 V |
| Inrush current | 20 A @ AC 115 V / 40 A @ AC 230 V |
| Internal fuse | T2A / AC 250 V |
| External protection | Mini-circuit breaker: B 4 A |

Output

| | |
|---|-------------------------------|
| Output voltage/current | DC 24 V/1.25 A |
| Rated voltage U_N | DC 24 V |
| Rated current I_N | 1.25 A |
| Power Dissipation | 5.5 W @ AC 230 V |
| Setting range $U_{out\ min.}/U_{out\ max.}$ | 24-28 V |
| Accuracy | ±1 % |
| Load regulation | ±0.5 % |
| Line regulation | ±0.5 % |
| Rise time | 2 s |
| Temperature coefficient | ±0.03 % / °C |
| Ripple and noise | <50 mV |
| Hold up time | 20 ms @ 115 V / 30 ms @ 230 V |

USA: LUTZE INC.

13330 South Ridge Drive • Charlotte, NC 28273, USA
Tel. +1 (704) 504-0222 • Fax +1 (704) 504-0223
www.lutze.com • info@lutze.com

19.08.2022 • Subject to technical modification

Part No. [722753](#) • Datasheet version: 01

page 1 of 4



SYSTEMATIC TECHNOLOGY

Technical data sheet

Power supply · 30 W

| | |
|----------------------------|---|
| Parallel / redundant mode | Max. 2 devices / via external decoupling diodes e.g. 722987 |
| Efficiency | 86 % |
| Over voltage protection | 125–137 % |
| Rated over load protection | 110–150 % |
| Short circuit | Fold Forward |

Status indication

Status indication DC ON LED green 18 V

Monitoring

| | |
|---------------------|----------------|
| DC ON Control (Rdy) | Open Collector |
| Switching voltage | DC 24 V |
| Switching current | ≤35 mA |
| Isolation voltage | None |

General

| | |
|------------------------------------|---|
| Switching frequency | 55 – 135 kHz |
| Insulation voltage input / output | DC 4.2 kV |
| Insulation voltage input / ground | DC 2.1 kV |
| Insulation voltage output / ground | DC 710 V |
| Insulation resistance at DC 500 V | 100 MΩ |
| Derating | 2.5 %/°C starting 61 °C |
| Cooling | Air convection, 25 mm clearance all-round |
| Housing material | Plastic |
| Mounting | DIN rail mountable TS35 (EN 60715) |
| Max. altitude operation | 5000 m (EN 62368-1) |
| Installation position | Vertical |
| MTBF | 665000 h |
| Degree of protection | IP20 |
| Protection class | I |
| Weight/unit | 0.29 kg |
| Connection type | Screw terminal 0.20 mm ² – 2.0 mm ² AWG 24 – AWG 14 |
| Dimensions (w × h × d) | 40.5 mm × 90.0 mm × 115.0 mm |
| PU (units) | 1 |

General ambient conditions

| | |
|-----------------------------|------------------------------|
| Operation temperature range | -40 °C ... +70 °C (Derating) |
| Storage temperature range | -40 °C ... +85 °C |
| Over voltage category | II |
| Degree of pollution | 2 |
| Relative air humidity | 20 – 95 % RH, not condensing |

Technical data sheet

Power supply · 30 W

Approvals/Standards

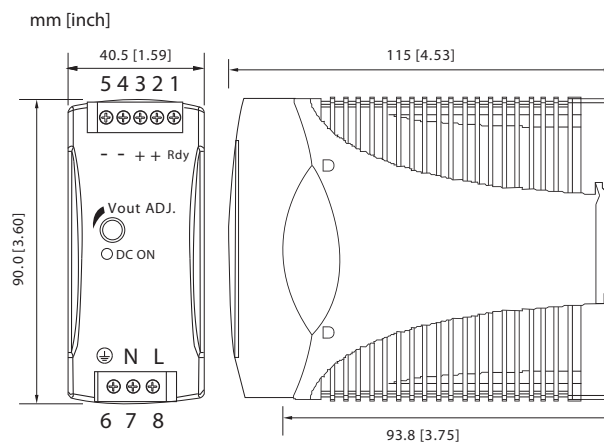
Approvals

UL 508 Listed (E249179)
UL 1310 Class 2 (E320708), (Class 1, Division 2, Groups A, B, C and D)
(E350538)
UL 60950-1
CE
UKCA

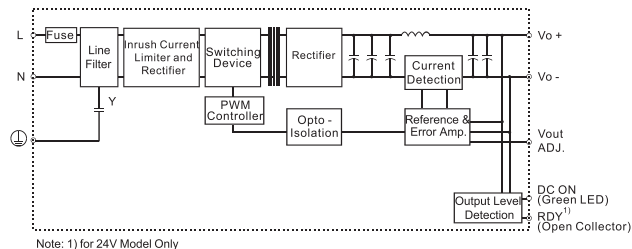
Standards

IEC/EN 62368-1
EN 61558-1
EN 61558-2-16
EN 61000-6-3
EN 55032 Class B
EN 61000-3-2 Class D
EN 61000-3-3
EN 61000-6-2
EN 55024
EN 61000-4-2 Level 4
EN 61000-4-3 Level 3
EN 61000-4-4 Level 4
EN 61000-4-5 L-N Level 3
L/N-FG Level 4
EN 61000-4-6 Level 3
EN 61000-4-8 Level 4
EN 61000-4-11 ENV 50204 Level 2
EN 61204-3

Dimensions



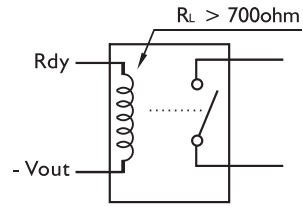
PIN assignment



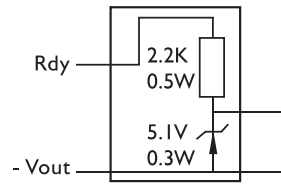
Use

Rdy connection

a) Relay

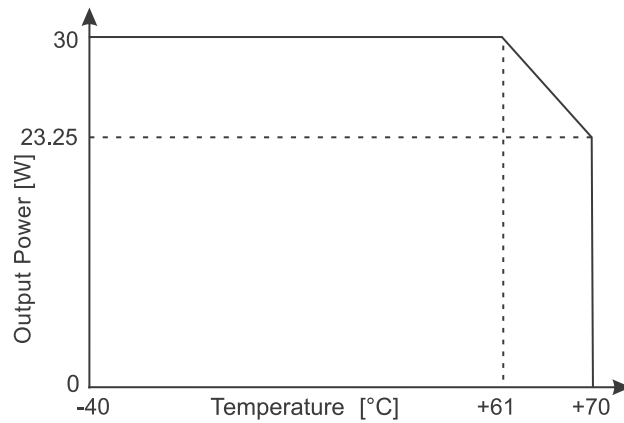


b) 5V signal



Note: for 24V Model only

Derating



Short circuit characteristics

